

**CAFEi2012 – 179**

**CERTIFIED PADDY SEED PRODUCTION AND PROCESSING**

Ahmad Termizi Ismail<sup>1</sup> and Abd Razak Said<sup>2</sup>

<sup>1</sup>Senior Manager, Paddy Seed Production Centre, Pertubuhan Peladang Kawasan Lahar Bubu, 13200 Kepala Batas, Pulau Pinang, Malaysia.

<sup>2</sup>General Manager, Pertubuhan Peladang Kawasan Lahar Bubu, 13200 Kepala Batas, Pulau Pinang, Malaysia.  
Email: ppbp\_ppklb@yahoo.com

**ABSTRACT**

The Ministry of Agriculture and Agro-Based Industry Malaysia has appointed a number of suppliers under Economic Transformation Program (ETP) with the involvement of private sectors in economic development to undertake the activities to supply the paddy seed in the country. PPK Lahar Bubu which is currently under the supervision of Farmer's Organization Authority/Lembaga Pertubuhan Peladang (LPP) is one of the suppliers appointed by the Ministry of Agriculture for the said purpose since 2007 until now. In ensuring that the production of the paddy seeds is in good quality which leads to the enhancement of the paddy's yield and supply, the Ministry has ensured that those suppliers are required to be certified under Rice Seed Certification Scheme by Agricultural Department. In order to be certified, the validation process by the Agricultural Department for the certification will be conducted end to end processes. Since the year 2007, PPK Lahar Bubu has produced quality paddy seeds from its factory at Kepala Batas, Pulau Pinang based on the quota given or stipulated by the Ministry. For record, the sources of the paddy seeds are obtained from farmers in various states such as Selangor, Perak, Pulau Pinang and Kedah. The paddy seeds produced by PPK Lahar Bubu will then be distributed to the members of the farmer organisations nationwide.

**INTRODUCTION**

Under the *Dasar Agro Makanan* (DAN), Chapter 3 – Enhancement of Paddy and Rice Industry, the strategy to enhance the productivity and quality of paddy and rice through the usage of quality and high produced paddy seed. Government has given private sector a role in production of certified paddy seeds. PPK Lahar Bubu was appointed as one of the certified paddy seeds producer for the country. It begins since the introduction of the program in 2007 and continues until now. PPK has been given 'grant' for the sum of RM7.116 million from LPP to build Paddy Seed Plant at Permatang Manggis, Kepala Batas, Pulau Pinang.

**Production of certified paddy seeds principles**

Under the country principle through food security, an effort has been taken to increase the production of rice through the usage of certified paddy seeds. In the production of the certified paddy seeds program, the Ministry of Agriculture and Agro based Industry (MOA) has determined for all farmers to use only certified paddy seeds in the plantation since 2010 in order to ensure that they receive quality paddy seed and endorsed by the Department of Agriculture. Under this principle, 85,000 tons paddy seeds are estimated to be produced a year for the usage of farmer in West Malaysia. From this 85,000 tons certified paddy seeds, PPK Lahar Bubu was given a quota of 7,680 tons

**Production of paddy seed's (INDUSTRIAL FLOW)**

In the industry trail it involves the Ministry, MARDI, Department of Agriculture and other producers. MARDI as a research agency and has responsibility to produce breeder and foundation seeds and to supply these paddy seeds to all producers who are appointed by government. The productions of this seeds are two important and critical aspects in production of paddy seeds in Malaysia. Department of Agriculture (DOA) has a roll to certify the production of certified paddy seed produce by producer.

As a certification body, DOA will issue department of agriculture seed certifications scheme to insure the quality standard of the production of paddy seeds are compiled with. The paddy seed producers are appointed by the government as the suppliers of the paddy seed to the farmers in the country. The producers are required to produce the certified paddy seeds in accordance with the given quota and these paddy seed must achieve the quality assurance determined by the Certification Body, i.e. Agriculture Department

Table 1: Paddy Seeds Quota

YEAR	QUOTA (TONS)
2007	3,500 MT
2008	5,000 MT
2009	5,000 MT
2010	7680 MT
2011	7680 MT
2012	7680 MT

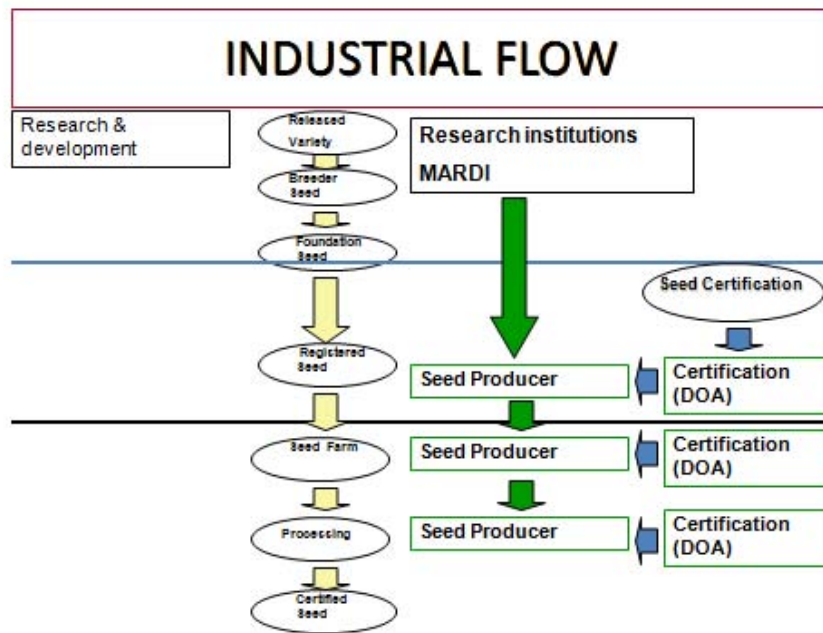


Fig. 1: Production of Certified Paddy Seed – Industrial Flow

**The paddy seeds certification procedure**

The certification of the certified paddy seeds will be monitored by the Agriculture Department through a scheme called Paddy Seeds Certification Scheme. This scheme is an assurance quality systems for the producers and the suppliers of the paddy seeds for purposes of plantation with the certain terms and conditions. The important aspect that has been determined is for the compliance to the fixed resources and the paddy seeds generation used and quality assurance fixed through the checking of the farm and auditing the premises, record and testing on the paddy seeds sampling.

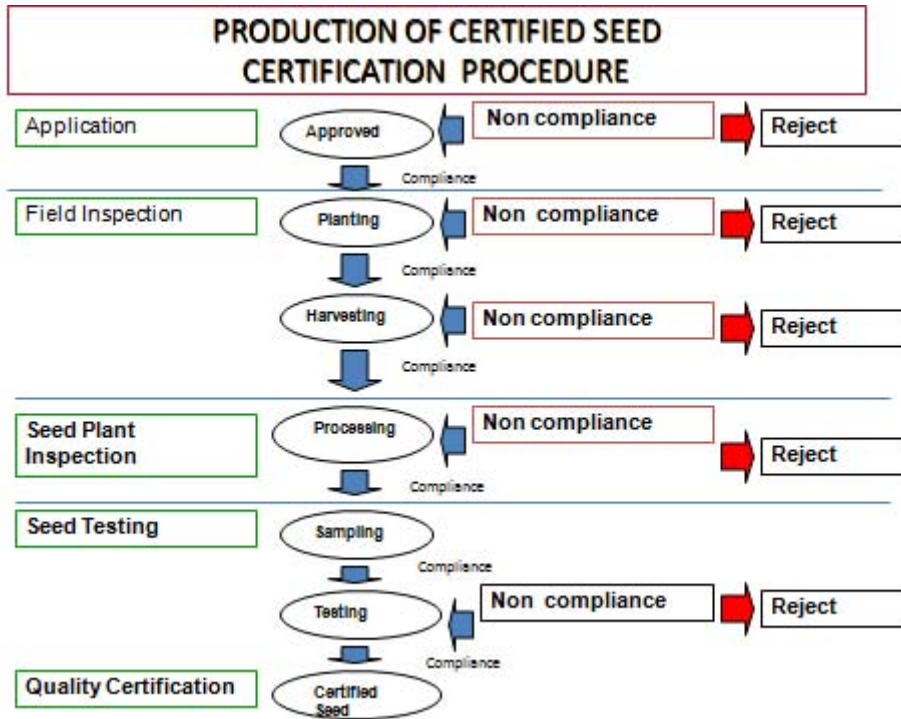


Fig. 2: Production of Certified Seed –Certification Procedures

**Production of the certified paddy seeds by PPK LAHAR BUBU**

Objective:

- a) To fulfil the quota for the paddy seed granted by the Government;
- b) To develop the farmers associations through the production of paddy seed activities; and
- c) To complement the industry value chain for Farmers Organisation;

In producing the certified paddy seeds PPK Lahar Bubu has collaborated with 16 others Farmer Organization in 4 states to implement paddy seeds farm. The implementation of the farms is done based on the SOP for paddy seed farms issued by LPP. In managing this farm, a Paddy Seed Development Committee has been established and chaired by the Director of Farm Production Department to oversee, manage and analyse the development of the implementation of the paddy seeds farm.

The processing of the paddy seed is an important to ensure that the paddy seeds can be processed as soon as possible after harvesting. The raw paddy seeds from the farm after yielding must be dried within 24 hours.

Processing objectives:-

- a) To segregate the paddy seed from dirts, straw and others
- b) To dry the paddy seed into certain percentage under 14%
- c) To ensure the germination of the paddy seeds are unaffected.

Machines in processing the seeds;

- a) Pre cleaner machine – to segregate the dirts
- b) Dryer machine – to dry the paddy seed
- c) Fine Cleaner machine – to segregate into sizes
- d) Gravity Separator Machine – to get the quality of the seeds
- e) Indented Cylinder – to get the standard size of seeds

The process flow for the paddy seeds is shown in figure 3:

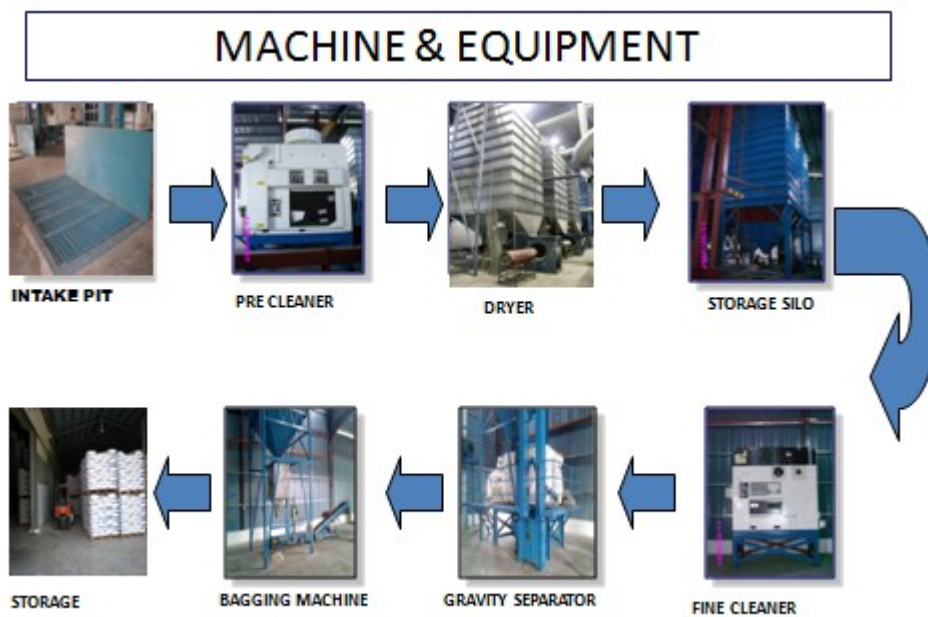


Fig. 3 : Machine and Equipment

### **Industry value chain for LPP**

LPP is responsible to develop the farmers movement institution in Malaysia has taken initiatives to strengthen the rice industry sector. LPP has provided the infrastructure such as tapak semaian, paddy seed development, rice purchasing centre, paddy seeds factory, rice mini estate development and the rice marketing activities. With these facilities, it completes the rice industry value chain and continuously being developed to assist the increase of the country rice production.

## INVOLVEMENT OF GOVERNMENT AND PRIVATE AGENCY IN PRODUCING THE CERTIFIED PADDY SEEDS

There are various agencies and private sectors involve in the production of the certified paddy seeds produced by PPK Lahar Bubu. Each of them has payed its role by contributing their expertise and others in ensuring the success of the project and the quality paddy seeds produced. The agencies and private sectors which are involved is shown in below:



Fig. 4: The agencies and private sectors which are involved

### The impact of the certified paddy seed

Based on the experience by PPK Lahar Bubu in implementing the production of this certified paddy seeds, it gives a big impact to the farmers and participants. Among others which is very obvious is the increase of the average paddy yield from 4.0 tons/hctr to 6.7 tons/hctr. The establishment of the agro entrepreneurs about 43 participants who have been working on the seeds farm in a big scale. Besides that, the purchase prices of the paddy seeds is higher from the price of rice, i.e RM100/tons and thus increase the income of the participants.

## CONCLUSIONS

The production of the certified paddy seeds program has been introduced by the government is a good step in ensuring the farmers to obtain the supply for quality paddy seed and certified by the Agriculture Department. LPP through PPK Lahar Bubu is committed to produce quality certified paddy seeds for the usage of the farmers in Malaysia and further can contribute to the increase of the rice production of the needs of Malaysian.

## REFERENCES

- [1] Jabatan Pertanian Malaysia (2009), *Skim Pengesahan Benih Padi Jabatan Pertanian*. 2<sup>nd</sup> Edition.
- [2] Hussain Mat Din et. Al. (2010) *Rice Foundation Seeds Production In Malaysia*, National Rice Conference 2010, 28-30 June 2010, Swiss Garden Golf Resort & Spa Damai Laut, Lumut, Perak.
- [3] Wan Darman W.Abdullah et. Al. (2010) *Production Of Certified Rice In Malaysia-Current Status And Future Direction*, National Rice Conference 2010, 28-30 June 2010, Swiss Garden Golf Resort & Spa Damai Laut, Lumut, Perak.